

The Maxi

Print area: 2x 600x190mm - 23.623" x 7.4803"

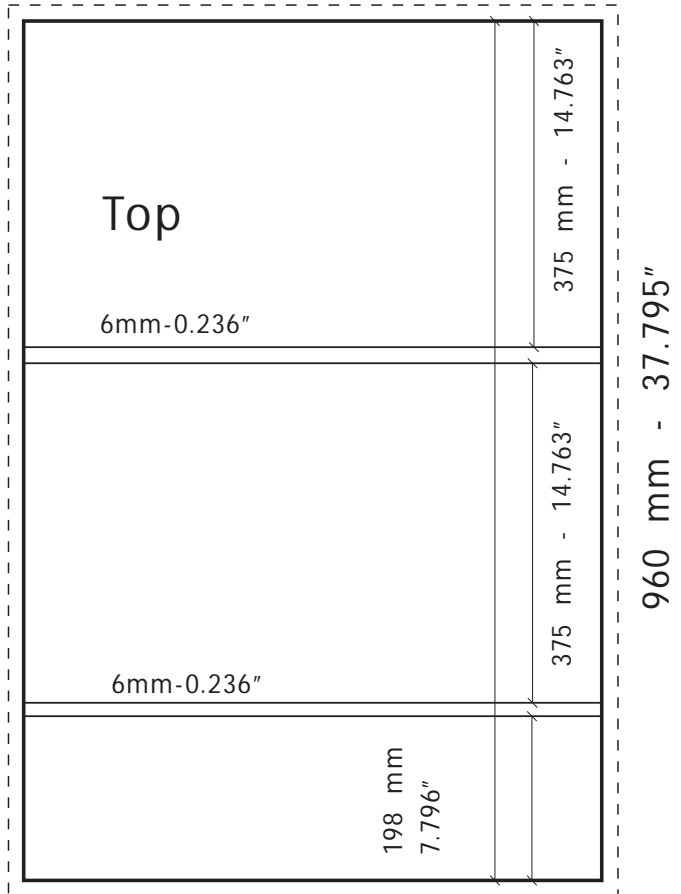
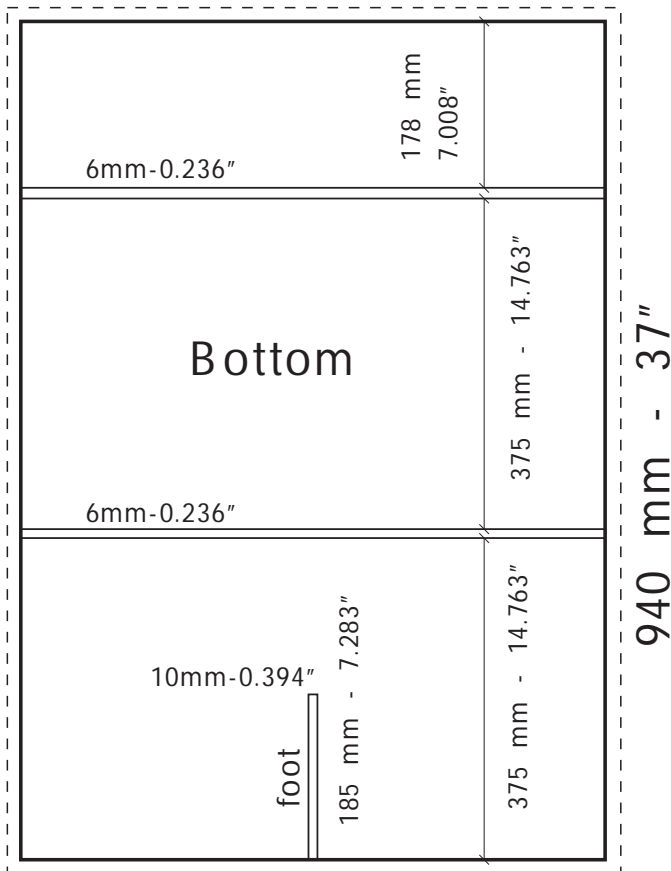
LAMà ECO

2sides

© LAMA 3

we will not be able to submit a firm quote until our design department has been able to study your requests for custom die cutting in the top part of

600 mm - 23.623"



600 mm - 23.623"

Specification film :

- Photoengraving Full size (100%)
- Screen 150, positive film offset, with chromatic proof (Cromalin, Matchprint)

For Digital Proofs, we only accept : digital Cromalin, digital Matchprint, Approval, Iris and DCP.

- Don't forget cutting film (top of Lamà if needed and border cut (about 2 cm - 0.8")

set of films to supply: 1set



Tel : +852 2441 4471

www.marins.net

Patented

Design

Design: François L'Hôtel for Marin's